

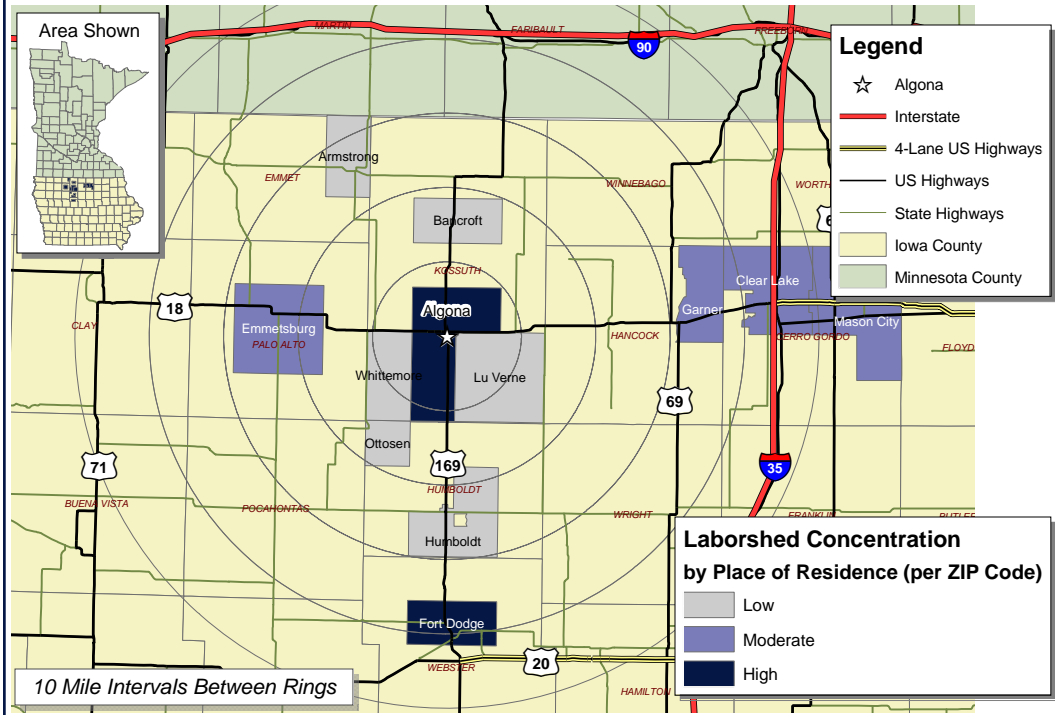
Labor Characteristics

Construction

Kossuth County, IA



Concentration of those with transferable experience/skills by place of residence



Potential Available Labor Per Occupational Category:

Business Operations:

- Managers - 729

Production:

- Supervisors - 294
- Carpenters - 147
- Electricians - 291
- Glazers - 136
- Construction & Building Inspectors - 124
- Precision Equipment & Instrument Repairers - 131
- Welders - 164
- Construction Laborers & Workers - 591
- Production Workers - 603

Material Movers:

- Drivers - 145
- Excavating & Loading Machine Operators - 142

An estimated total of 3,497 people in the Laborshed area

Workers who have transferable experience/skills are currently commuting an average of 16 miles one way for work. Those who are willing to change/accept employment are willing to commute an average of 19 miles one way for the right employment opportunity.

Employment Status:

70.8% Employed

- 29.4% of the employed are willing to change employment

25.0% Unemployed

4.2% Retired

Education Levels:

- 50.0% Education beyond high school
- 8.3% Associate degree
- 4.2% Trade certified
- 4.2% Undergraduate degree

Flexibility in the Workplace:

(by percent of interest)

- Cross-training - 44.4%
- Varied shifts (2nd, 3rd, & split) - 33.3%
- Job sharing - 22.2%
- Job teams - 77.8%
- Seasonal work - 50.0%
- Temporary work - 25.0%

Other Facts:

- 79.2% paid an hourly wage
- 70.8% are/were employed full-time
- 16.7% are/were self-employed
- 8.3% are/were employed part-time
- 0.0% hold more than one job
- Currently working an average of 47 hrs/week

Current Benefits:

- Health/medical insurance - 100%
- Dental coverage - 38.5%
- Pension/retirement/401K - 38.5%
- Vision coverage - 38.5%
- Paid vacation - 15.4%
- Prescription drug coverage - 15.4%
- Life insurance - 7.7%
- Paid sick leave - 7.7%
- Disability insurance - 7.7%

Desired Benefits:

(by percent of interest)

- Health/medical insurance - 75.0%
- Pension/retirement/401K - 37.5%
- Dental coverage - 25.0%
- Paid holidays - 12.5%

Top Advertising Media:

(for those seeking employment opportunities)

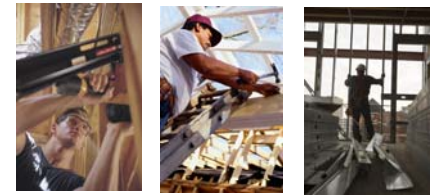
- Local/Regional Newspapers
 - The Des Moines Register
 - Globe Gazette - Mason City
 - The Messenger - Fort Dodge
 - The Algona Upper Des Moines
- The Internet
 - www.iowaworkforce.org
 - www.monster.com
 - www.hotjobs.com
 - www.jobs.com
- Local Iowa Workforce Development Centers

Underemployment:

Total Underemployment - 4.2%

- Low hours - 0.0%
- Mismatch of skills - 0.0%
- Low income - 4.2%

IWD only counts individuals once when estimating Total Underemployment.



The Iowa Workforce Development (IWD) Region 3 & 4 aggregate wage data was also extracted from the Iowa Wage Survey and is provided in the table on page 2 which reflects mean, entry, experienced, and median wages.

Kossuth County Economic Development Corp.

106 S. Dodge, Ste 210

Algona, IA 50511

Phone: 515-295-7979

Fax: 515-295-8873

Email: kcedc@kossuthia.com

www.kossuth-edc.com

Information was compiled by Iowa Workforce Development using 2008 Laborshed data.

Occupation	Occupational Code	Mean Wage	Entry Wage	Experienced Wage	Median Wage
Carpenters	47-2031	\$ 14.19	\$ 10.35	\$ 16.12	\$ 13.18
Cement Masons and Concrete Finishers	47-2051	\$ 14.72	\$ 11.01	\$ 16.58	\$ 14.31
Construction Laborers	47-2061	\$ 11.90	\$ 8.63	\$ 13.53	\$ 11.59
Construction Managers	11-9021	\$ 37.02	\$ 23.56	\$ 43.74	\$ 31.18
Electrical and Electronics Repairers, Commercial and Industrial Equipment	49-2094	\$ 18.59	\$ 12.55	\$ 21.62	\$ 14.78
Electricians	47-2111	\$ 17.61	\$ 13.15	\$ 19.84	\$ 17.16
Electronic Home Entertainment Equipment Installers and Repairers	49-2097	\$ 10.41	N.A.	\$ 12.52	\$ 9.76
Excavating and Loading Machine and Dragline Operators	53-7032	\$ 14.73	\$ 12.69	\$ 15.74	\$ 14.68
First-Line Supervisors/Managers of Construction Trades and Extraction Workers	47-1011	\$ 29.02	\$ 17.73	\$ 34.67	\$ 27.85
First-Line Supervisors/Managers of Transportation and Material-Moving Machine and Vehicle Operators	53-1031	\$ 23.63	\$ 13.49	\$ 28.70	\$ 25.85
Helpers--Installation, Maintenance, and Repair Workers	49-9098	\$ 10.47	\$ 8.12	\$ 11.65	\$ 9.70
Highway Maintenance Workers	47-4051	\$ 16.48	\$ 13.88	\$ 17.79	\$ 16.93
Industrial Truck and Tractor Operators	53-7051	\$ 12.27	\$ 10.39	\$ 13.22	\$ 11.96
Installation, Maintenance, and Repair Workers, All Other	49-9099	\$ 12.07	\$ 9.41	\$ 13.40	\$ 12.18
Laborers and Freight, Stock, and Material Movers, Hand	53-7062	\$ 11.78	\$ 8.86	\$ 13.23	\$ 11.14
Operating Engineers and Other Construction Equipment Operators	47-2073	\$ 16.38	\$ 13.21	\$ 17.97	\$ 15.72
Painters, Construction and Maintenance	47-2141	\$ 13.57	\$ 10.61	\$ 15.04	\$ 12.34
Pipelayers	47-2151	\$ 18.57	\$ 11.74	\$ 21.98	\$ 19.34
Plumbers, Pipefitters, and Steamfitters	47-2152	\$ 19.42	\$ 15.66	\$ 21.29	\$ 18.67
Roofers	47-2181	\$ 14.13	\$ 10.60	\$ 15.89	\$ 14.12
Telecommunications Equipment Installers and Repairers, Except Line Installers	49-2022	\$ 23.77	\$ 20.20	\$ 25.56	\$ 25.10
Truck Drivers, Heavy and Tractor-Trailer	53-3032	\$ 14.52	\$ 9.34	\$ 17.12	\$ 13.57
Truck Drivers, Light or Delivery Services	53-3033	\$ 16.25	\$ 8.13	\$ 20.31	\$ 13.61

This Iowa Wage Survey for the Iowa Workforce Development (IWD) Region 3 & 4 service area was produced by the Workforce Data & Business Development Bureau to provide communities local information on wages by occupation. This publication was developed specifically for the IWD Region 3 & 4. The source of the wage and employment data is the 2007 Iowa Wage Survey. Additional data from the Iowa Wage Survey for individual counties, Iowa Workforce Development regions, and by industry statewide are available on the Iowa Workforce Development web site located at www.iowaworkforce.org.