

GUEST SPEAKERS:

Topic: ISU's Bioeconomy Initiative



Dr. Robert Brown

Director, Bioeconomy Institute
Iowa State University
(515) 294-7934

Robert Brown is the Bergles Professor in Thermal Science at Iowa State University. He is the Director of ISU's Office of Biorenewables Programs and the Center for Sustainable Environmental Technologies. He is an expert in bioenergy and thermochemical conversion of biomass to fuels. He is a Fellow of the American Society of Mechanical Engineers. Dr. Brown played a key role in establishing the Biorenewable Resources and Technology graduate program at ISU, the first such degree-granting program in the United States.

Topic: ISU's New Century Farm



Joe Colletti

Senior Associate Dean, College of
Agriculture & Life Sciences
Iowa State University
(515) 294-1823

Dr. Joe Colletti joined the ISU faculty in 1978 and has had many research, teaching, service/administrative experiences. In 2004-05, he served as Interim Chair for the Department of Natural Resource Ecology and Management and 2005-06 served as Interim Senior Associate Dean in the College of Agriculture and Interim Associate Director of the Iowa Agriculture and Home Economics Experiment Station. As of July 2006, Colletti now serves as the Senior Associate Dean in the College of Agriculture and Life Sciences and Associate Director of the Iowa Agriculture and Home Economics Experiment Station.

Topic: Dairy Digesters



Danny Kluthe

Owner, OLean Energy
(402) 720-3410

Danny Kluthe has lived in Dodge, NE all his life, farmed row cropping corn, soybeans and alfalfa. He specializes in hog production and has an anaerobic digester. Danny is a director for Cumings County Public Power District, director for NE Rural Electric Association, Planning and Zoning Commissioner for Colfax County, Dodge Community Foundation Board member and a 2007 graduate of the NE LEAD Program.

Topic: POET's Project LIBERTY



Jim Sturdevant

Director, Project Liberty
POET
(605) 965-2368

Jim Sturdevant of POET is the Director of Project Liberty, and is based at POET Headquarters in Sioux Falls, South Dakota. Jim joined POET in 2007 following a 22-year career with the U.S. Geological Survey. His diverse experience includes operations management, project management, government contract administration, and research. He received a Bachelor of Science degree in geography from South Dakota State University and a Master's degree in geography from Oklahoma State University. Sturdevant is currently pursuing a Ph.D. in Leadership from the University of St. Thomas in St. Paul, Minnesota. Jim was born and raised in Sioux Falls, where he currently resides with his wife, a pharmacist at Sanford Health Systems.

Local Business Updates:

Dave Rosenmeyer, General Manager
East Fork Biodiesel, Algona, IA

Ron Sikora
Farmers Corrugated Solutions, Ruthven, IA

Topic: ILCC Wind Energy Program



Mike Schmidt

Instructor, Wind Energy Program
Iowa Lakes Community College
(712) 362-8376

Mike Schmidt is a seasoned and respected speaker on Wind Energy, having presented to groups across the nation since he became an instructor with the Wind Energy and Turbine Technology program at Iowa Lakes Community College in 2005. Mike is organizing an effort this year to bring seminars on Small Scale Renewable Energy Systems to interested individuals in the Midwest. Mike is a Licensed Master Electrician; a member of the American Legion; and a member of Kossuth Advocates for a Sustainable Environment.

Topic: Energy Grant Programs



Chris Mercer

USDA Rural Development
(515) 332-4411

Chris Mercer is the local Business and Cooperative Programs specialist for USDA Rural Development out of the Storm Lake office. In his 10 county area, Chris works with 10 programs including the 9006 Renewable Energy & Energy Efficiency Loan & Grant Programs and the Value Added Producer Grant Program.

Topic: Jefferson Wind Energy Project



Bill Sutton

Hardin Hilltop Wind Developer
(515) 370-0406

Bill will explain the development path of a wind energy project near Jefferson, Iowa and will speak about future developments in the industry. Bill is the President of Sutton Farms, Inc, a 1600 acre grain farm, President of the Greene County Farm Bureau Board of Directors, Member of the Energy Advisory Team for the Iowa Farm Bureau Federation.

Ag Energy Day
Thursday, March 13, 2008
9:00 am - 3:00 pm
Wild Rose Casino
(U.S. Hwy 18, Emmetsburg)

Registration Clip & Send:

Name _____

Business _____

Address _____

City, State, Zip _____

Phone _____

Please list any additional attendees from your company:

Early Bird Special:
Registration fee is **\$13.50** per person until **February 29th**.
After **March 1st**, the registration fee is **\$15** per person.
All registrations must include payment.
Please send your registration along with your check made payable to:
**Kossuth/Palo Alto County Economic
Development Corporation**



Kossuth/Palo Alto County
Economic Development Corporation
Maureen Elbert, Executive Director

106 South Dodge Street, Suite 210
Algona, IA 50511
Phone: (515) 295-7979
Fax: (515) 295-8873
Email: kcedc@kossuthia.com

Ag Energy Day 2008



Kossuth/Palo Alto County
Economic Development Corporation
106 South Dodge Street, Suite 210
Algona, IA 50511

Thursday, March 13, 2008

9:00 am—3:00 pm

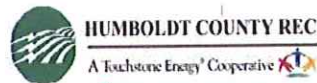
Wild Rose Casino, Emmetsburg

Registration begins at 8:15 am

A service provided by:
Kossuth/Palo Alto County
Economic Development Corporation

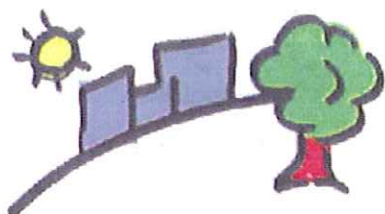
THANK YOU TO OUR SPONSORS:

Algona Municipal Utilities
Animal Medical Center
Bank Plus
Farm Credit Services
Farmers State Bank
Iowa State Bank
Iowa Trust & Savings Bank
K & H Oil
Kossuth County Cattlemen's Assoc.
Kossuth County Pork Producers
Kossuth/Palo Alto County Farm Bureau
Kossuth Veterinary Clinic
Northwest Federal & Savings Bank
NorthStar Bank
Palo Alto County Cattlemen's Assoc.
Rabo AgriFinance
Tom Eischen Sales



SCHEDULE OF EVENTS:

8:15 - 9:00 am: Registration
9:00 - 10:15 am: Morning Session
10:15 - 10:30 am: Break
10:30 - 11:30 am: Morning Session
11:30 am - 12:15 pm: Lunch
12:15 - 1:45 pm: Afternoon Session
1:45 - 2:00 pm: Break
2:00 - 3:00 pm: Afternoon Session



Kossuth/Palo Alto County
Economic Development
Corporation