

KCEDC 2009/2010 Accomplishments

Partnerships for Growth

Worked with **Iowa Department of Economic Development** to research and identify financial assistance programs that aid businesses with start-ups and expansions. Funds are awarded from a variety of programs based on factors such as job creation, employee wage thresholds, company benefits and the impact of the project on the Iowa economy.

KCEDC Executive Director has served on the PDI Board of Directors for four years and currently serves as the Past President of the **Professional Developers of Iowa (PDI)**.

PDI is a State Board.

Continued to work with **Mid Iowa Growth Partners** a nine county regional organization. KCEDC Director serves as Past President of this regional organization.

Worked with **Iowa Lakes Community College** to identify and promote business-training classes that will assist new and existing business.

Facilitated the interaction between startup businesses and the **Iowa Small Business Development Center** of Spencer and the **NIACC Pappajohn Business Accelerator** office in Mason City.

Collaborated with **Corn Belt Power Cooperative, MidAmerican Energy, Alliant Energy, Iowa Lakes Electric Cooperative, Bancroft Municipal Utility, Whittemore Municipal Utilities, Humboldt County REC, and Algona Municipal Utilities** with sponsoring events through their partnership grant program.

Worked with **USDA Rural Development** to identify grant programs for new start-up businesses.

Worked with **North Iowa Area Council of Governments** and **NW Iowa Planning** to identify community and business grant opportunities for community development projects and business start-ups or expansion projects.

Annual Programs and Events

Developed the only Intern Program in the State of Iowa. The KCEDC Summer Intern program is designed to prevent "brain drain" by demonstrating to our young adults that there are careers available in the area. The program includes several business training seminars and an opportunity to network with area CEO's at an Intern/CEO Luncheon. The interns created "Project Hope" which gives comfort to children/teenagers who have been removed from their homes in Kossuth County by providing personal health care products.

Sponsored the **Annual County Wide Breakfast.** This event creates a networking opportunity for area business and industry leaders. The event also features a guest speaker that delivers timely and relevant information.

Facilitated **Ag Energy Day on to the Next Level**, which featured guest speakers from Iowa Farm Bureau Federation, BECON Facility, POET, Alliant Energy, USDA Rural Development, Iowa State University Research Park, CCUR at Iowa State University, and NextEra Energy.

Sponsored **CEO Network** Quarterly educational meetings.

Continued to facilitate the **City Clerks** Quarterly Meetings, which provide educational speakers and a review of new programs that will affect communities in Kossuth and Palo Alto Counties.

KCEDC Executive Director participates in **"Sell Iowa Trips"** to market Kossuth and Palo Alto Counties to external audiences for the State of Iowa. Iowa Department of Economic Development sponsors these promotional trips along with the utility partners.

Maintained **Synchronist and Location One Information System statewide databases** for Kossuth and Palo Alto counties. These provide quick access to economic indicators, land and building availability, infrastructure, and demographic data for state and utility company economic development offices.

Business and Industry Assistance



Assisted **Country Maid** with providing technical and partner information for financial assistance for their 40,000 sq foot expansion project. 19 additional jobs being created along with retaining their current workforce.

The \$84,783 in excise tax that Global Ethanol paid in 2009 - 2010 equates to a **contribution of \$46,875.93 to the North Kossuth School System**. To date Global Ethanol has paid a total of \$199,892 in property tax, \$911,936 in excise tax on natural gas consumption, and \$28,584 in grain tax.

Assisted **Architectural Arts** with financial assistance programs through Iowa Department of Economic Development for tax benefits in creating 50 jobs in an Enterprise Zone.

Working with Next Era Energy Systems with potential **wind farms** being established throughout the county.

Assisted **Pioneer Research Labs** with identifying financial assistance for their 10,000 square foot expansion project. Total capital investment is \$1,350,000.

Assisted with designating 601 acres under the Enterprise Zone for **Poet BioRefining** for future tax credits and incentives. First ever cellulose to ethanol commercial production facility; Projected costs are over \$200 million dollars.

Assisted **Kossuth Regional Health Center** with pulling resources and identifying state and utility financial assistance programs. Total capital investment will be approximately \$13.5 million.

Assisted **YMCA** in obtaining the USDA grant for their childcare program.

Assisted both counties with **Enterprise Zone** land designations and projects.

Continually on call to meet with and **bring potential partners** to the table to assist new start-up companies or existing companies with expansion or workforce needs.

Created the **Industrial Park Booklets** and maps to market industrial parks in both Kossuth and Palo Alto Counties. Maps appear on our websites, trade magazines and are sent to site selectors.

Our Work Never Stops!

Continual Projects

Established the **Kossuth County Revolving Loan Fund** and serve as the Administrator. The program has successfully loaned out over \$318,000 to businesses in Kossuth County.

Established the **Palo Alto County Revolving Loan Fund** for small business development loans.

Submit proposals to site selectors for both Kossuth and Palo Alto Counties communities to potential business prospects. Proposals contain aerial photos of buildings, land, labor statistics, transportation and local financial assistance.

Websites are continually updated with current information and statistics: **www.kossuth-edc.com** and **www.paloaltoiowa.com**

Designated property under **Enterprise Zones in Kossuth and Palo Alto Counties**. Business locating or expanding in an established Enterprise Zone may be eligible to receive certain local and state tax incentives.

Maintained **GIS maps of Enterprise Zone** designations in Kossuth and Palo Alto Counties. These maps are located on the websites and are updated as land designations are approved.

Conducted statewide promotion of **Christmas Around Kossuth and Palo Alto County** for area retailers during the holiday shopping season.

Distributed **Visitor Guides** to all welcome centers in the State of Iowa and surrounding communities in both counties.

Assisted in the development stage of establishing the **Kossuth County Community Foundation**.

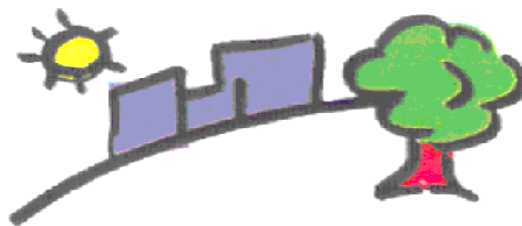
Vested member of the **Iowa Career Consortium** of IDEED. This benefit for KCEDC Business Investors allows them to display job opportunities on the ICC website and to be able to review a pool of skilled and educated workforce when they have a need.

Continued to work through our different committees to promote Kossuth and Palo Alto Counties and their areas of emphasis. The committees are: **AG, Career-Intern, CEO, City Clerks, and Communications**.

The CEO Steering Committee continued to meet with businesses through **Business & Industry Call Visits** to identify any potential expansions, business growth, modernizing business operations, employment and marketing trends.

Published 2010 **Business Survey Findings**, which is data compiled from participating area businesses in **Kossuth and Palo Alto Counties**. The information obtained from the Business Survey questionnaire is an intricate part of business retention and expansion for Kossuth and Palo Alto Counties.

Published semi-annual **newsletter**.



Your support makes this possible!